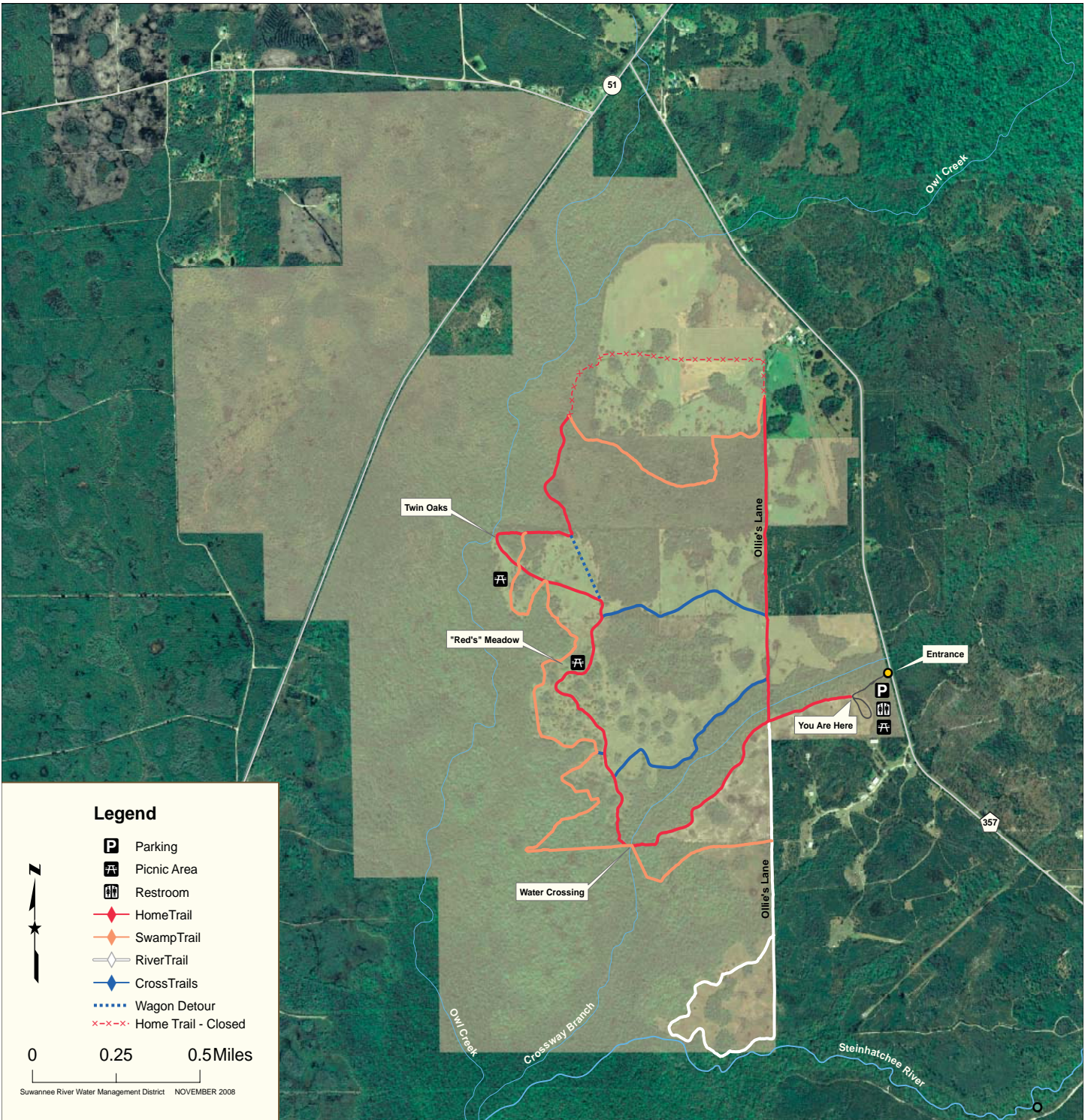




R.O. Ranch Equestrian Park Trail Map



Home Trail (RED) - Easy

5 miles/2-hour ride (approximate)

Suitable for horse and wagon; features a low water crossing of Crossway Branch. To avoid the water hazard, turn right at Ollie's Lane and follow the Home Trail (red diamonds); turn left on the Cross Trail (blue diamonds) and follow it to the Home Trail (red diamonds); turn right to continue the Home Trail.

Swamp Trail (ORANGE) - Moderate

6 miles/3-hour ride (approximate)

Suitable for horses only; features a low water crossing of Crossway Branch. Exit the parking area on the Home Trail (red diamonds) to Ollie's Lane, turn left, and follow the River Trail (white diamonds) to the Swamp Trail (orange diamonds); turn right and follow the Swamp Trail 2 miles. Join the Home Trail (red diamonds) and follow it for ½ mile; the Swamp Trail (orange diamonds) turns right. Follow the Swamp Trail ¾ mile to the Home Trail (red diamonds), turn right and follow the Home Trail to the parking area.

River Trail (WHITE) - Moderate

3 miles/1-hour ride (approximate)

Suitable for horses and wagons. Exit the parking area on the Home Trail (red diamonds), turn left at Ollie's Lane on the River Trail (white diamonds). Follow the River Trail back to Ollie's Lane; turn right and follow the Home Trail (red diamonds) back to the parking area.

Cross Trails (BLUE)

The Cross Trails are shortcuts that allow the user to bail out of the Home Trail and get back to the parking area without riding the entire trail.

***** TRAIL CLOSURE and DETOURS *****

Due to construction, the north end of the Home Trail (RED) has been closed (trail marked by red x's). Horses will be able to detour around the construction by using the Swamp Trail (ORANGE). Wagons will be able to detour (trail with blue dotted lines) around construction by using the Cross Trail (BLUE). Signs will be posted to mark all of the closed trails and detour routes.

**Each Rider MUST Obtain a Special Use Authorization
(Available from kiosk)**